

Robert B. Gerber, DDS
Tower Dental Group
Tower Dental Implant Center

NEWS

Summer 2005

Tower Dental Group
Robert B. Gerber, DDS,
Director

Telephone
(310) 652-0450

FAX
(310) 652-0458

email
rbgdds@aol.com

Cedars-Sinai
Medical Towers
8631 West Third Street
Suite 730-East
Los Angeles,
California 90048-5911

Lila
Dental Hygienist

Narine
Dental Hygienist

Yelena
Dental Hygienist

Lisett
Treatment Coordinator

Karen
Administrative Assistant

Marjorie
Dental Assistant

Porcelain laminate veneers may be the answer...

...if your teeth are stained, chipped, or unevenly spaced

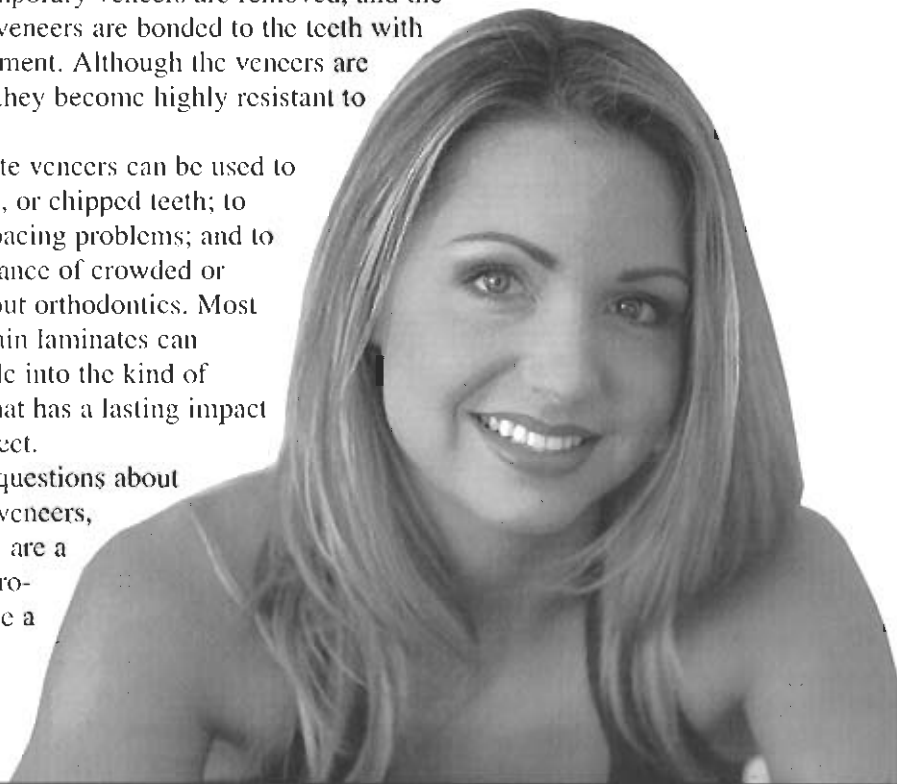
Nothing says more about you than your smile. It is said that your eyes are the "windows" to your soul and your smile is the "mirror" of your personality. Now you can make sure that mirror holds a beautiful reflection. It should be the kind of smile that people will remember.

The key to the transformation may be porcelain laminate veneers—an artistic, high-technology breakthrough that can dramatically improve the look of your natural teeth.

Porcelain laminate veneers are custom fabricated to achieve the desired color and shape selected for your teeth in just two visits. At the first visit, there is minimal tooth reduction of the selected teeth, impressions are made, and attractive temporary veneers are fabricated to prevent any interim cosmetic problems and to minimize posttreatment discomfort. At the second visit, the temporary veneers are removed, and the porcelain laminate veneers are bonded to the teeth with specialized resin cement. Although the veneers are thin, after bonding they become highly resistant to wear and staining.

Porcelain laminate veneers can be used to cover stained, worn, or chipped teeth; to correct color and spacing problems; and to improve the appearance of crowded or crooked teeth without orthodontics. Most importantly, porcelain laminates can transform your smile into the kind of memorable smile that has a lasting impact on everyone you meet.

If you have any questions about porcelain laminate veneers, or to find out if you are a candidate for this procedure, or to arrange a consultation, please call **Dr. Gerber** at **310-652-0450**.



Visit our Web site: www.rbgerberdds.com
Thank you for your referrals. We appreciate them!